

Video Recorder App



Introduction.

This app is part of the Video Bundle which contains 5 different video functions to successfully capture, record and upload video files captured through a connected webcam or video recorder. The bundle also includes a file manager so that files are stored and managed within the Acquire Log files and a video playback manager. This is a comprehensive app that provides complete control over the video media files allowing you to make adjustments and change settings to the brightness, hue, contrast and saturation and audio levels. We have also developed a unique video clipping tool to provide a level of editing. Videos can be clipped so that specified sections of videos are played back. With advanced functionality the app can also perform intelligent actions such as jumping to another page, or quitting a page once the video as finished playing providing you with complete control of video content.

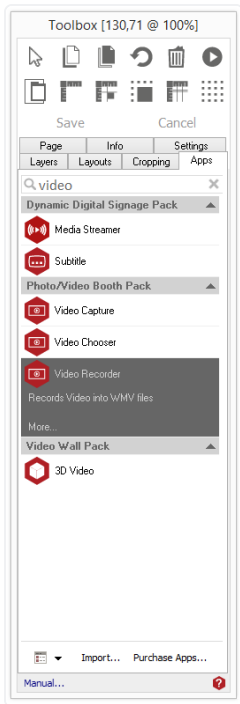
Uses.

This page app allows you to record a section of video from a suitable video capture device (eg: a web cam). This video can then be uploaded to an FTP server using the [Upload Videos project app](#).

Using Video Recorder app.

To access the app open an existing or new page and select the **'App'** tab of the page editor **'Toolbox'** (shown below). Apps are grouped within the relevant app packs and are displayed red if they have been licensed. For more information about licencing apps go to [Licencing apps](#).

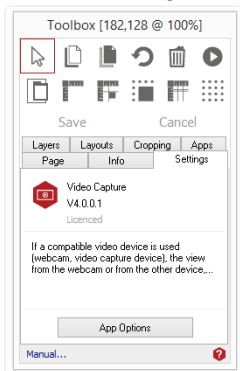
Select the app from the list or search for it using the search bar. When an app is selected it will be highlighted as shown.



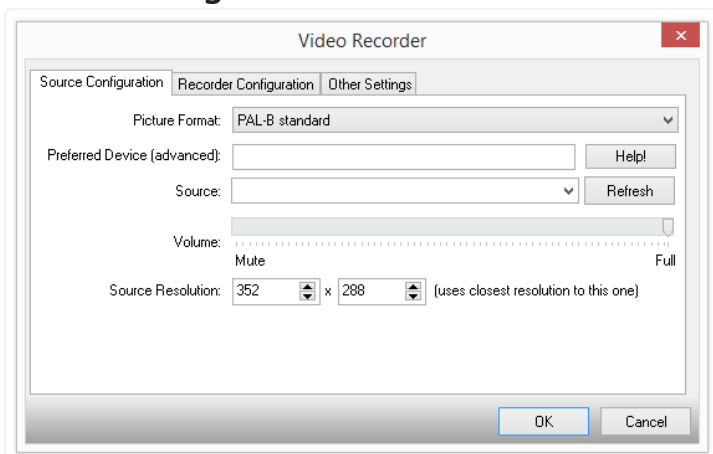
Once you have selected your app draw an area on your page where you would like to use the app. In this case you will be drawing a space where you want your button included on your page.

The **'Settings'** tab within the Toolbox will automatically open when the app is added to the page.

From here you can set your app up by clicking on the **'App Options'** button.



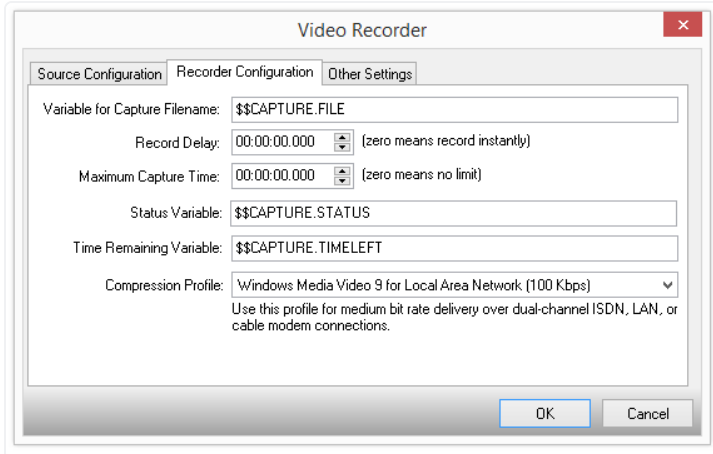
Source Configuration tab.



1. **Choose the format of the picture being received:** Eg: PAL or NTSC.
2. This is a hint as to which video capture device to use should you have more than one installed.
3. **Choose the input from the video capture device:** Some devices have several inputs such as S-Video and Composite.
4. **Choose the volume you wish the audio to be recorded at.**

5. **Choose the resolution of the image to capture from:** This is not the resolution that the video file will be output at.

Recorder Configuration tab.



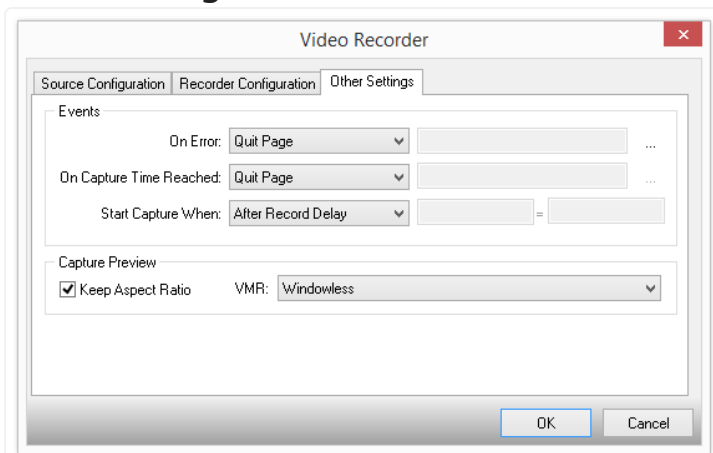
The second tab allows you to configure the recording.

Type the name of the file you wish to save to. If you specify an Acquire variable then the plug-in will generate a file in the temporary folder and save its filename to this variable.

Type in the number of seconds you wish to delay the recording. Before this the picture will be shown as a preview. This is typically used to provide a five second countdown before recording.

- **Maximum Capture Time:** This specifies the maximum length of video that should be recorded.
- **Status Variable:** The status of the recording is written to this variable. Typically this will be set to:
 - **“Recording”** - The plug-in is recording to file.
 - **“Ready”** - The plug-in is ready to start recording
 - **“number”** - This is the actual number of seconds before recording starts. Typically used to show a count-down.
- **Time Remaining Variable:** This variable is populated with the amount of recording time left.
- **Compression Profile:** Choose the level of compression used. The video files are recorded as Windows Media Video 8 videos.

Other Settings tab.



Here you can configure other areas of control.

Use the events section to control how the recording happens:

- On Error: Choose what to do if an error is encountered communicating with a capture device or writing to disk.
- On Capture Time Reached: Tell Acquire what to do when the maximum amount of recording time has been reached.
- Control when capture begins. You have the choice of After Record Delay set in the Recorder Configuration tab, or when a variable is set to a specific value.

Use to control how the video preview is displayed: Choose the VMR mode that works best with your video hardware. This might be through trial and error.