

Twitter App



Introduction.

If your company has a Twitter profile this App will retrieve and display twitter feeds connected to that profile. The app will regularly check for new feeds and publish them live (as and when they are 'tweeted') or update them at regular intervals. The app also includes advanced functionality like being able to control the system through special commands that are '**tweeted**', such as jumping to a page or playing a specific media files. The app can also follow and publish a unique hashtag rather than a profile so that updates can me made simply by including the hashtag within a comment. You can also prevent post that that may include obscenities or indecent content from being published.

Uses.

A Twitter feed contains the tweets from a Twitter account timeline or a search. The feed data (text and media) can be shown in your Acquire projects by selecting the feed as the External Source of a page item or by using an Acquire System Variable. See Appendix 1 for more information.

Feeds can be streamed (accessed live) or polled at regular intervals.

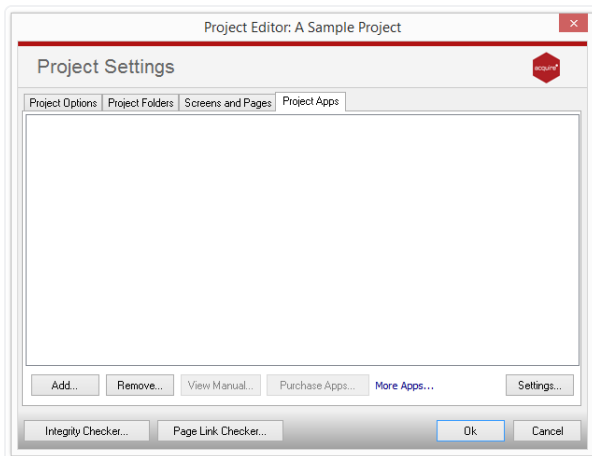
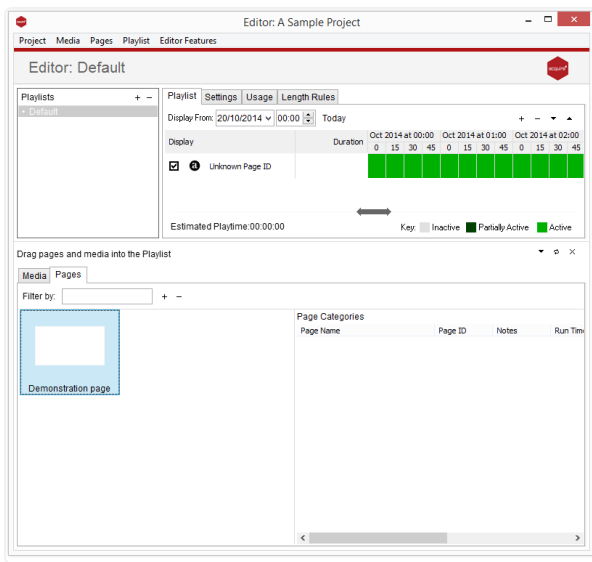
You can control your project by tweeting special commands. Simply define Control Tags (command words found in a tweet) to perform special actions, such as jumping to a specified page.

as:lightbulb This app only reads tweets. It does not write, alter or delete your tweets.

as:lightbulb Twitter imposes certain rate restrictions on how many connections can be made to an account. See Appendix 2 for more information.

Adding the app to your project.

From the Project Editor window navigate to the '**Project**' tab and select '**Settings**' from the drop down menu.

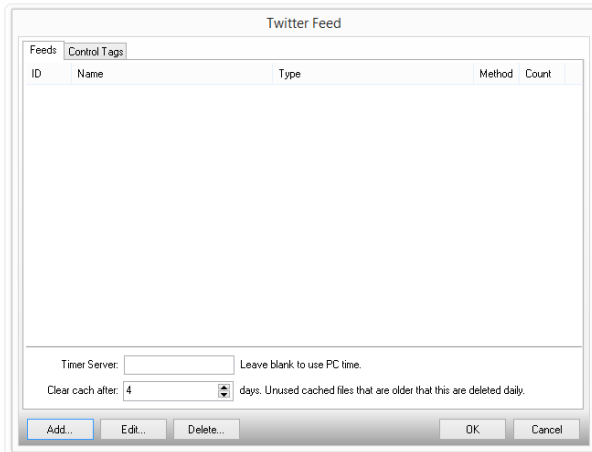


In the Project Settings go to the **'Project Apps'** tab and click the **Add** button. Select the app from the list.

Tip: Unlicensed apps will be greyed out and can only be used during your 30 day trial. For more information about licencing apps go to [Licencing apps](#).

App Options.

This is the settings window. It consists of a preview panel and settings tabs.



Preview Panel:

This panel provides an overview of your feeds. Each feed is a different Twitter account that the app connects to and monitors for Tweets. You can double-click a feed to edit it.

Time Server:

In order to establish a connection with Twitter the correct standard internet time (Network Time Protocol) must be used. This can be obtained from a Time Server such as pool.ntp.org.

If you are sure that your player will have the correct system time you may leave this blank.

Clear Cache:

Feed data such as profile images and tweet media is cached to disk. Files that are have not been used for longer than the number of days specified here will be deleted daily.

Adding a Feed:

Each feed consists of connection details to a Twitter account and settings for what type of tweets to extract etc. A twitter account must allow this app to access it.

Press **Add** to begin the following authentication process:

1. Your default web browser will open asking you to log into your Twitter account.
2. The app will open a window asking for a PIN number.
3. Use the browser to log in to Twitter and authorize the app to access your account.
 - A PIN number will be generated.
4. Enter the Twitter PIN into the app window and press OK. A new feed will added to the Feeds List.

Configuring a feed.

Select a feed and press Edit or double-click the feed to show the Feed Settings window.

The screenshot shows the 'Twitter Feed' settings window. It includes a title bar with a close button. The main area is titled 'Feed Settings' and contains a Twitter logo. The 'Feed' section has a 'Name' field with 'My Twitter Account' and an 'ID' field with '1'. Below this is a 'Monitor Type' dropdown set to 'Stream' and an 'Every' field set to '15' seconds. The 'Tweets' section has a 'Tweet Type' dropdown set to 'Home Timeline (all tweets on user's timeline)', a 'Value' field, a 'Make Title From' dropdown set to 'Name and Screen Name', and a 'Get Media From' dropdown set to 'Tweet media if exists, otherwise use Profile im'. There is also a 'Maximum Tweets' field set to '10' and three checked checkboxes: 'Process Control Tags in Tweets', 'Refresh current page on each Tweet', and 'Remove links from Text'. The 'Filters' section has two empty text boxes for 'Only include Tweets that contain a word/phrase in this list:' and 'Do not include Tweets that contain a word/phrase in this list:'. A note at the bottom states: 'NOTE: Filters are a list of comma seperated words and phrases'. At the bottom right are 'OK' and 'Cancel' buttons.

Name: The name of your feed. This is just for your reference and be anything you like.

ID: The feed ID is automatically generated and is required when using Acquire variables.

[See Appendix 1 for more information.](#)

Monitor Type: Select how to the app should connect to your account:

- Stream This method will open a continuous connection.
- Poll This method will connect periodically as set in the adjacent Seconds box.

as:lightblue) Twitter imposes certain rate restrictions on how many connections can be made to an account.
See [Appendix 2](#)

Tweet Type: Select what tweets to extract from the Twitter account:

- Home Timeline: Use all tweets on the account's timeline.
- User Timeline: Use only tweets posted by the account holder.
- Search For: Use tweets that contain the value in the adjacent box. This can be a #tag or a username etc.

Make Title From: Tweets don't have inherent titles. But they can be created for use in Acquire from the elements in the drop down box.

Get Media From: Not all tweets contain media. Use this box to determine what should happen if not.

Maximum Tweets: The maximum number of tweets that the app keeps in memory. To keep overheads down set this to the maximum number of tweets that you will show at once.

Process Control Tags in Tweets: Select this for the app to process Control Tags found in the tweets from this feed.

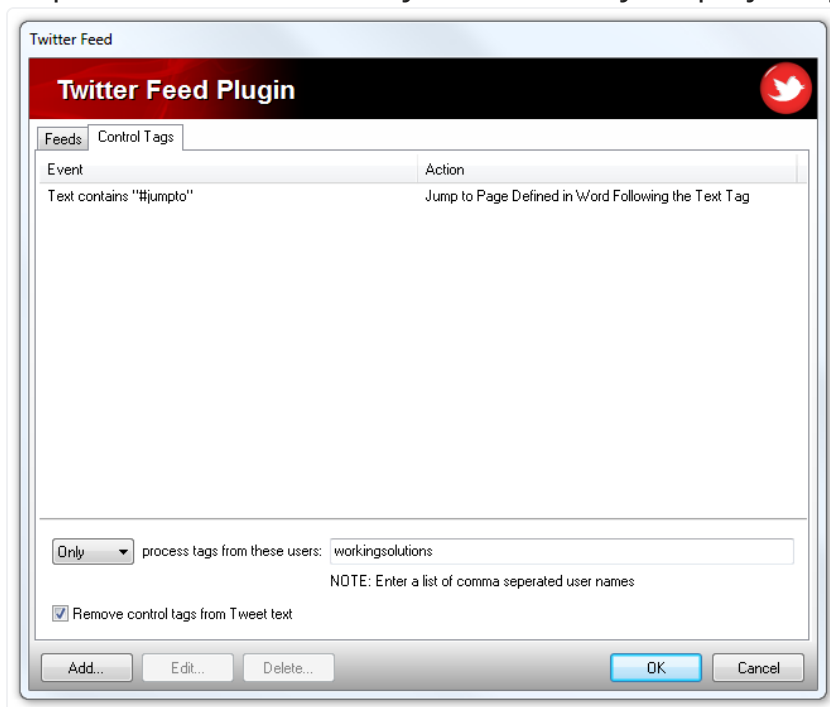
Refresh current page on each Tweet: Select this to reload the current page when a new tweet is posted.

Remove links from Text: Select this to remove web and media links from the tweet text prior to displaying in Acquire.

Filters: Enter lists of comma separated words/phrases. Only tweets that whose text matches these lists will be used. Tweet text, titles and locations are checked. Leave blank to ignore the filter and use all tweets.

Control Tags tab.

Control Tags are special command words that the app will look for in tweets. When found a specified action will be performed. This allows you to control your project by tweeting commands.



Control Tags list: This is an overview of your Control Tags. Each Control Tag consists of an Event (command words to look for in the tweet text) and an Action (what to do when that Event happens).

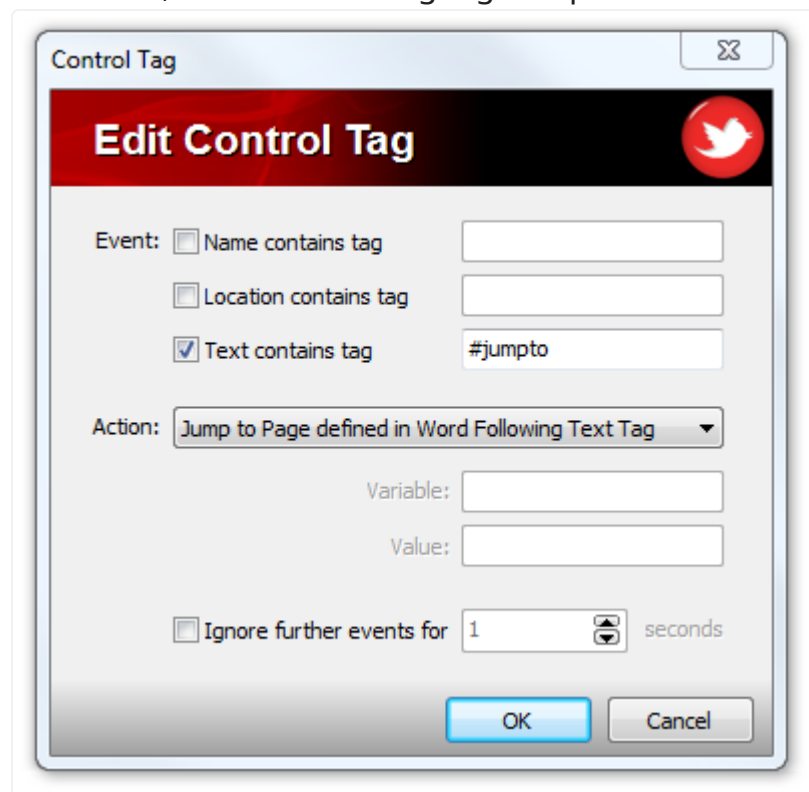
Enter a list of comma separated user names and select to Only or Never process Control Tags from users in this list. In this way you can restrict who has control over your project.

Only or Never: Enter a list of **comma** separated user names and select to **Only** or **Never** process Control Tags from users in this list. In this way you can restrict who has control over your project.

Remove control tags from Tweet text:

Configuring a Control Tag.

Press **Add**, select an existing tag and press **Edit** or double-click the tag to show the Control Tag settings window.



Events: An event is triggered when a new tweet contains a specified tag word in its Name, Location or Text.

Action: When the Event occurs select what Action to perform. Use the boxes below to enter values for the selected Action.

Ignore further events for: Use this to prevent another Control Tag from interrupting this Event too early.

Appendix 1 – How to use Twitter Feeds in Acquire

These are two methods to show tweets in Acquire:

1. Put a app or tool on your page that supports feeds and choose External Source for its media. From the External Source window you can select the Twitter Feed app.

Tip: If you can't see the Twitter Feed app please ensure that you are using the latest version of Acquire.

Select what feed and what story and field to show from that feed.

2. Use the \$\$_twitter Acquire System Variable in text tools etc.

The variable is written in this format \$\$_twitter[feedid, tweetindex, element] where:

feedid: is the ID of the feed. This is can be obtained from the Feed List.

tweetindex: is the number of the tweet to use. 0 is the latest tweet and 1 is the previous tweet etc.

element: is what part of the tweet to use and can be one of the following words:

Words:

title: Tweet title

story: Tweet text

mediafile: First media file in tweet
Mediadesc: URL of first media file in tweet
Pubdate: Tweet creation date
author: Name or user who posted the tweet
url or link: First link in tweet
picture: Tweet author's profile picture
picturedesc: URL of tweet author's profile picture
website: Tweet author's Twitter site
profile: Name and Screen Name of the tweet author
location: As tweeted *
tag: Unique ID of the tweet

* This will contain the location selected when tweeted otherwise the user's profile location. Locations must be enabled in the Twitter Account settings

Example:

```
$$_twitter[3, 0, title]
```

This would show the title part of the first tweet of the Twitter feed with ID number 3.

Tip: If this method fails please ensure that you are using the latest version of Acquire.

Appendix 2 – Limitations

Twitter only allows clients (e.g. this app) to make a limited number of connection requests in a given hour. This policy affects the connection methods in different ways:

Polling: 350 requests per hour are allowed. This roughly equates to one request per 10 seconds. For this reason the Polling period is restricted to a minimum of 15 seconds.

Streaming: Each account may create only one standing connection to the Streaming API. Subsequent connections from the same account may cause previously established connections to be disconnected. Excessive connection attempts, regardless of success, will result in an automatic ban of the client's IP address. Continually failing connections will result in your IP address being blacklisted from all Twitter access.

If you think you have been blacklisted, or you need to extend these rates, please contact Twitter. More information can be found here <https://dev.twitter.com/docs/rate-limiting>