

Tube Updates App



Introduction.

Retrieve and display live status updates from the London Underground streamed directly to your screens. Supplied by the Transport for London free Transport Data Service updates are automatically displayed on digital displays and have been successfully used in reception areas, office blocks and hotel lobbies.

Uses.

The app sets a predefined list of Acquire Variables with live London Tube line status data.

The data is supplied by the Transport for London free Transport Data Service

Use of this service is governed by Transport for London's Terms and Conditions and Syndication Developer Guidelines which can be found at the website below.

as:triangle-
nation

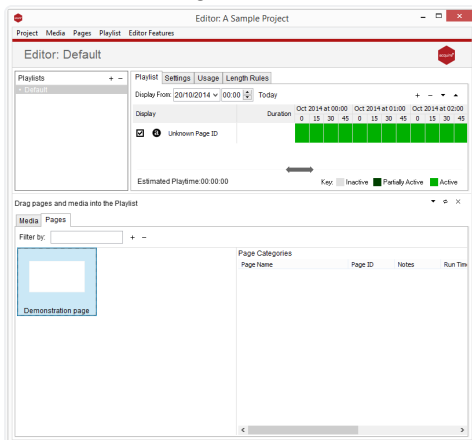
Please read before using this plugin.

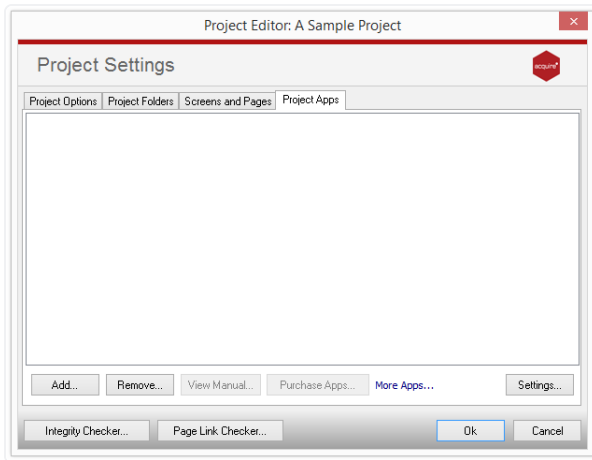
<https://tfl.gov.uk/info-for/open-data-users/>

<https://tfl.gov.uk/corporate/terms-and-conditions/transport-data-service>

Adding the App to your Project.

From the Project Editor window navigate to the **'Project'** tab and select **'Settings'** from the drop down menu.

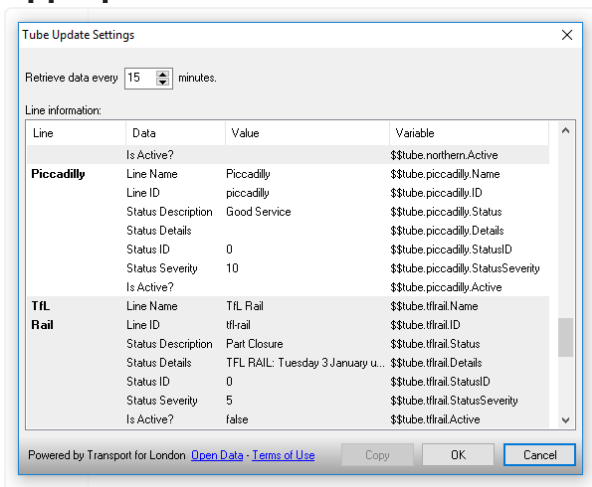




In the Project Settings go to the **'Project Apps'** tab and click the add button. Select the app from the list.

Tip: Unlicensed apps will be greyed out and can only be used during your 30 day trial. For more information about licencing apps go to [Licencing apps](#).

App Options.



Data will be retrieved and Acquire Variables set when the app is first run (when your project starts) and then at regular intervals as set here.

A preview of the data that is retrieved per Tube line. Each line contains:

Data: The name of the data.

Value: The current value of that data.

Variable: The Acquire Variable name that the Value is saved into.

as a tip you can select one or more items in this list and that press **"Copy"** to copy the Acquire Variable names to the clipboard ready for use in the Acquire Premier Editor etc.