

Trigger App



Introduction.

The Trigger app introduces a new dimension into retail with the ability to create a truly immersive shopping experience. This is one of our more recently developed apps designed to bring a new and innovative twist to the standard point of sale (POS) or point of purchase (POP) displays. The app's function is to trigger a near-by display playing particular content when an item is lifted off the shelf or clothes rail. It works by monitoring serial ports that are connected to the clothes rail or shelf. When the weight changes the serial ports change triggering the screens.

Uses.

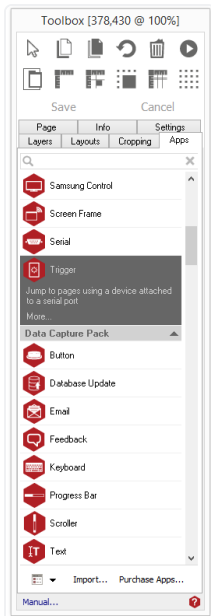
This is not just limited to retail environments and could be used in any scenario where serial ports can be used.

Using Background Respond.

To access the app open an existing or new page and select the **'App'** tab of page editor **'Toolbox'** (shown below). Apps are grouped within their relevant app packs and are displayed red if they have been licenced.

For more information about licensing apps go to [Licencing apps](#).

Select the app from the list. When an app is selected it will be highlighted as shown.



Once you have selected your app draw an area on your page where you would like to use the app. The **'Settings'** tab within the Toolbox will automatically open when the app is added to the page. From here you can set your app up by going to **'App Options.'**

Understanding the App Options.

Serial Port: Enter serial (COM) port number to monitor. Use the button to test the port. If the app can communicate with it a green marker will appear next to the DSR, CTS and Ring Indicator lines indicating their

low or high state.

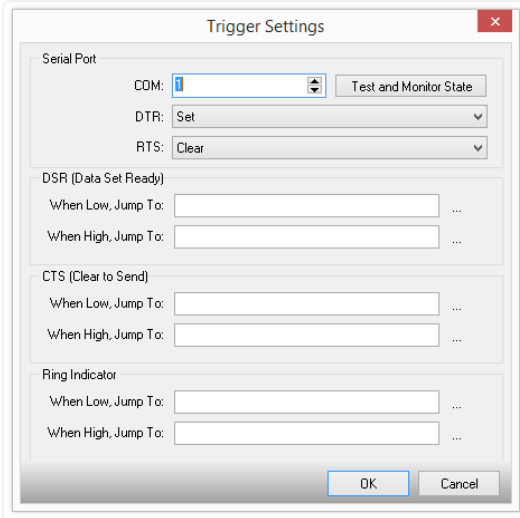
You can also Set or Clear the DTR (Data Terminal Ready) and RTS (Request To Send) lines when the app is first shown. Some devices requires these to enable communication or are used to power the device.

DSR (Data Set Ready)

CTS (Clear to Send)

Ring Indicator

Enter the ID of a page to jump to when the line is Low or High.



Example of Usage.

The serial port can be wired in such a way that buttons can be connected to it. When the buttons become pressed they can trigger the sections above.

Configure the DTR and RTS lines to Set.

Connect a button/switch between:

- Pin 9: RI (Ring Indicator)
- Pin 8: CTS (Clear to Send)
- Pin 6: DSR (Data Set Ready)

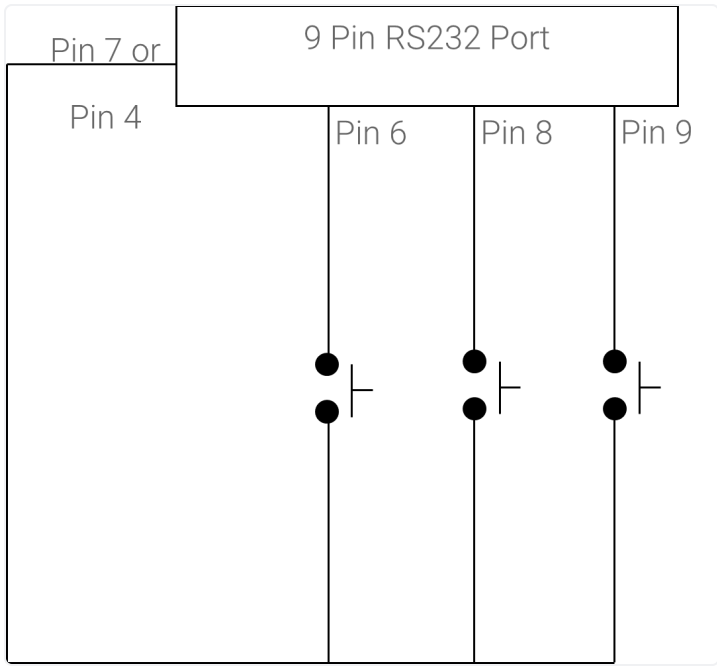
And

- Pin 4: DTR (Data Terminal Ready)

or

- Pin 7: RTS (Request to Send)

Example Wiring.



as:lightbulb We are not responsible to any damage caused to you or your computer systems as a result of using this information.