

TV App

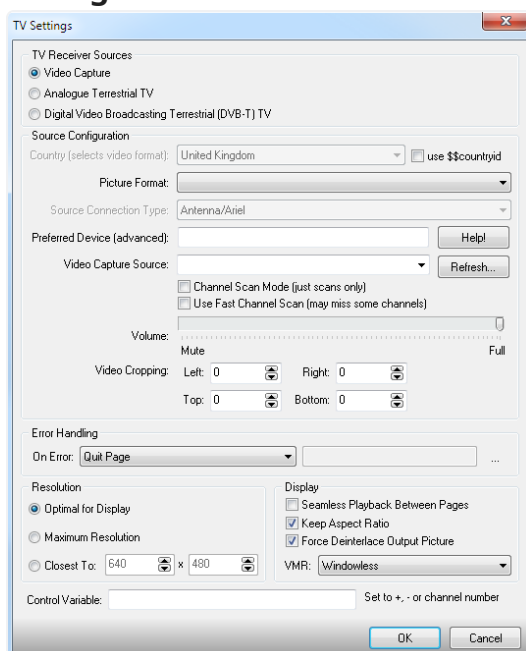


Purpose

This page plug-in allows Acquire to display video from an external device, such as a video capture card, TV card, or even a web cam. The TV page plug-in supports pictures from Analogue TV, DVB-T TV and video capture (usually provided by most TV cards).

We are currently working to extend the digital TV support to work with other standards. The appendix shows the world wide distribution of digital television standards.

Configuration window



TV Receiver Sources: This section allows you to choose where the video picture is to be received from. The options are Video Capture, Analogue TV, and Digital (see appendix)

Source Configuration.

Country: For the two TV inputs the plug-in needs to know what country it is running in so that it may tune correctly. If you tick the use \$\$countryid field the country code is taken from this variable instead. These are the standard country codes and are more or less the same as the international dialling codes.

Picture Format: For video capture this allows you to choose the format of the signal typically NTSC or PAL.

Preferred Device: A hint for the plug-in to select the preferred options from a number of connected devices. Press the Help! Button for more information. This is only required if you have problems getting a picture or sound.

Source/Channel: For each type of source this will be different. For video capture this will be the input connection (e.g. S-Video or Composite). For Analogue TV this will be a list of analogue TV channels. For digital TV this will be a list of digital TV channels.

If you tick the channel scan mode then the plug-in performs a channel scan only. The Fast Channel Scan option is about five times faster but fails to find any channels with some TV cards.

Volume: Set the audio output volume.

Error Handling.

Should an error occur you can tell the plug-in to:

- Notify Acquire (which will log the error and either end the page or do nothing depending on if the page has Ignore Page Errors ticked or not.
- Quit Page
- Jump To Page ID (enter the ID of the page)

Resolution.

Optimal for Display: Chooses a size that is as close to the size of the plug-in box drawn out. This will ensure the maximum required quality for a sharp image without having to resize pictures too much.

Maximum Resolution: Will choose the highest quality that the device supports. This may cause the image to be resized and thus use more CPU time.

Closest To: Allows you to specify a resolution. The plug-in will find the closest resolution to this size that the device supports. This is useful if you find that choosing Optimal for Display results in a slowly updating, low frame rate picture or too low resolution.

Display.

Seamless Playback Between Pages: The plug-in will try to maintain constant video playback even between page changing in Acquire. To achieve this smoothly, the plug-in will overlay the video on top of Acquire. This means you cannot place any text or media on top of the plug-in. It is also strongly recommended that you do not use this option on an interactive page.

Keep Aspect Ratio: When ticked, the TV picture will retain the aspect ratio of its source and black bars will be placed in the empty areas.

Deinterlace Output Picture: Attempts to enable de-interlacing on the playback.

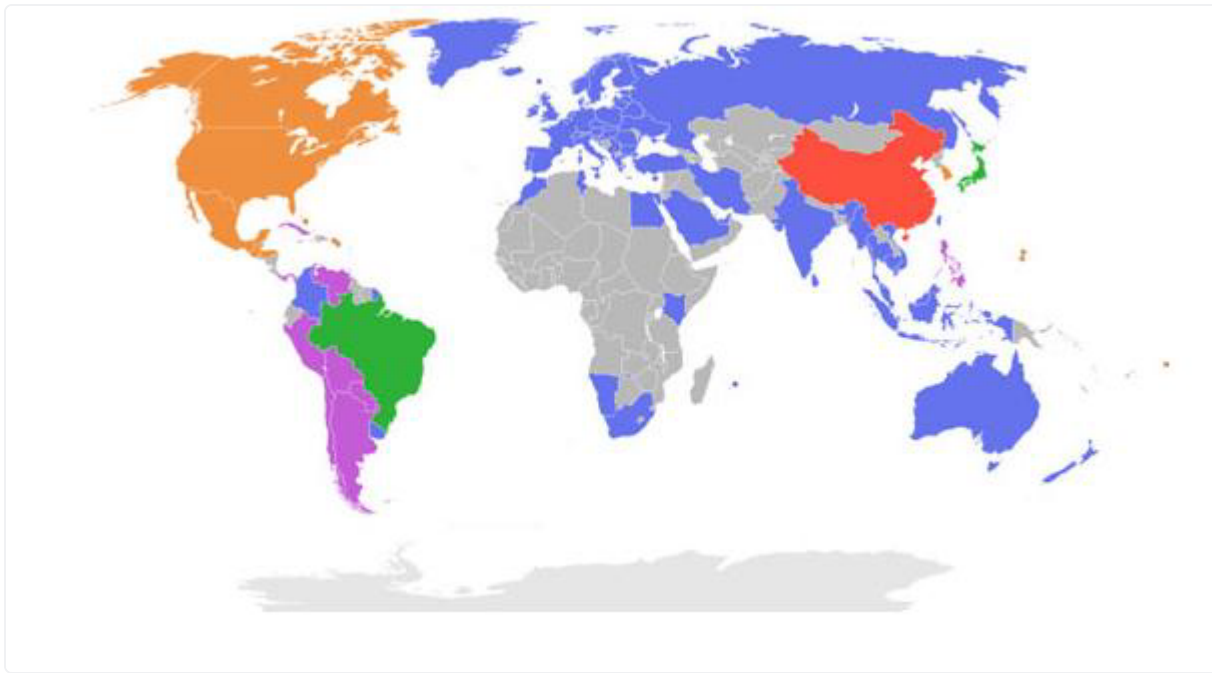
VMR: This box specifies two different rendering styles. Some hardware only supports one of these two methods. Windowless mode is the best looking as it will ensure the least amount of blank screen during loading and closing pages.

Control Variable: Enter the name of an Acquire Variable to be used to control this plug-in. When this is set to "+" or "-" the channel number will increase or decrease and the plug-in will reset the variable. When set to the number of a channel the plug-in will try to tune to that channel.

Appendix

There are many different digital broadcasting standards across the world.

Currently the TV plug-in only supports DVB-T. The following image shows which countries support which standard.



- DVB-T
- ATSC
- ISDB-T
- DMB-T/H
- Unknown