

Samsung Control App



Introduction.

The app allows you to control a compatible Samsung connected to the system.

Uses.

Typically this app is used when the MagicInfo software has been replaced by Acquire. An automated install script can be provided for this purpose should it be required. Contact your reseller for more information. There are three *DLL* files which should be located within the system as part of the Samsung install that are used by this app. If these are missing then this app will not operate. The *DLL* files are called *MDCComApi.dll*, *MDCCommApi.dll* and *MDCSerial.dll*. Alternatively, you can directly connect using RS232 or RJ45.

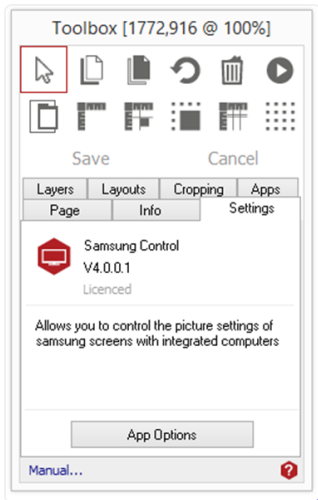
Using Samsung Control app.

To access the app open an existing or new page and select the **'App'** tab of the page editor **'Toolbox'** (shown below). Apps are grouped within the relevant app packs and are displayed red if they have been licenced. For more information about licencing apps go to [Licensing apps](#).

Select the app from the list or search for it using the search bar. When an app is selected it will be highlighted as shown.



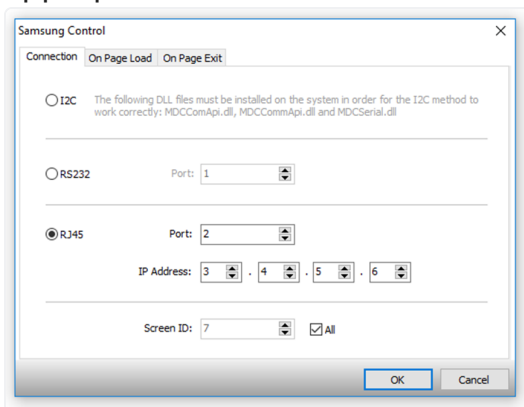
Once you have selected your app draw an area on your page where you would like the app to be shown. The **'Settings'** tab within the Toolbox will automatically open when the app is added to the page. From here you can set your app up by clicking on the **'App Options'** Button.



Understanding the App Options.

The app allows you to apply settings to the screen on load/play and on stop/page exit. This is an overview of the settings that can be configured for the app.

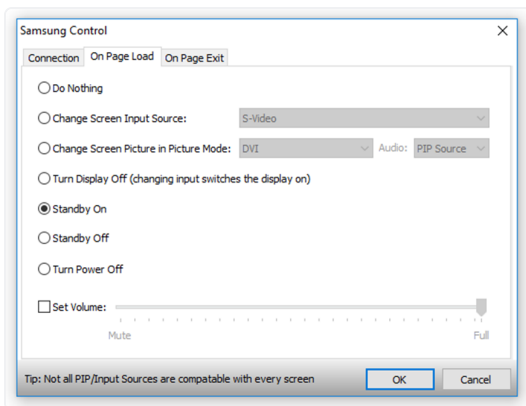
Use the Connection page to select how your screen is connected to the PC. You must select the method appropriate for the screen model.



- I2C requires the following DLLs to be installed on your system.
MDCCComApi.dll
MDCCCommApi.dll
MDCCSerial.dll
- RS232 requires the COM port number.
- RJ45 requires the port and IP Address of the monitor

For the RS232 and RJ45 methods, you can also select the ID of the screen you want to affect, or select All to affect all the attached screens.

Use the On Page Load and On Page Exit pages to set select what settings to apply you the screen/s when the Acquire page is loaded or exited.



Do Nothing: If this is selected, the display is not changed. (This does not affect whatever volume settings you may have set).

Change Screen Input Source: This will cause the display to switch on if it was previously off, and then to change input to the source you have selected. Note that not all of the options on this list will be available to your model of screen.

Change Screen picture in Picture Mode: This enables the Picture in Picture mode on the display. This will only work if the current input source is set to PC. The picture box will be displayed where the app window is placed on the page. You can also choose which audio source is sent to the speakers. Note that not all screens support every combination of picture in picture modes.

Turn Display Off: Actually switches the screen off. This is the same as pressing the power button on the remote.

Standby On: Put the screen in standby mode.

Standby Off: Take the screen out of standby mode.

Power Off: Completely power down the screen.

Set Volume: Allows you to set the volume of the speakers attached to the screen.

as:lightbulb *note that not all settings are compatible with all screens.*