

RSS Feed App



Introduction.

Use the RSS Feed app to show real-time RSS Feed updates from external sites. It works by downloading data from MRSS, RSS 2.0 RSS 1.9 and ATOM feeds to use in your Acquire projects. The app will automatically cache feed data for use in the event that an internet connection is lost, preventing blank spaces appearing on screen.

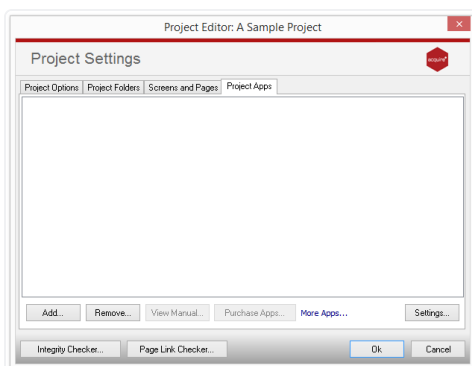
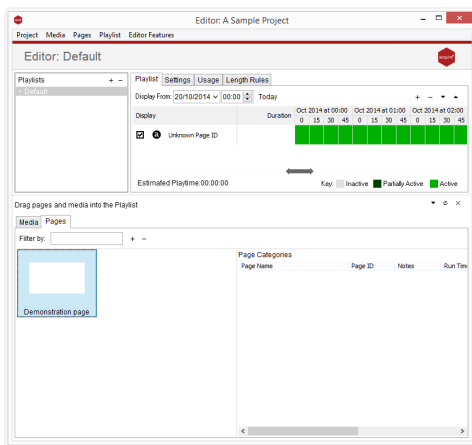
Feed content can also be filtered by keywords ensuring that feeds displayed are relevant to your on screen project.

A feed can contain whole websites to be cached and hosted locally by the RSS Feed app. Please contact Acquire to find out more about these special items.

Using the RSS Feed App.

From the Project Editor window navigate to the **'Project'** tab and select **'Settings'** from the drop down menu.

In



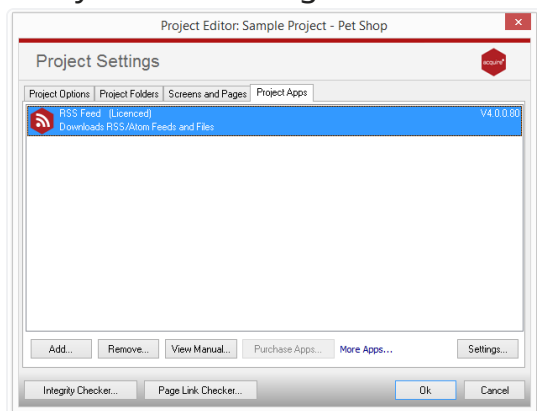
In the Project Settings go to the **'Project Apps'** tab and click the **add** button.

Select the app from the list.

as:lightbulb licensed apps will be greyed out and can only be used during your 30 day trial.

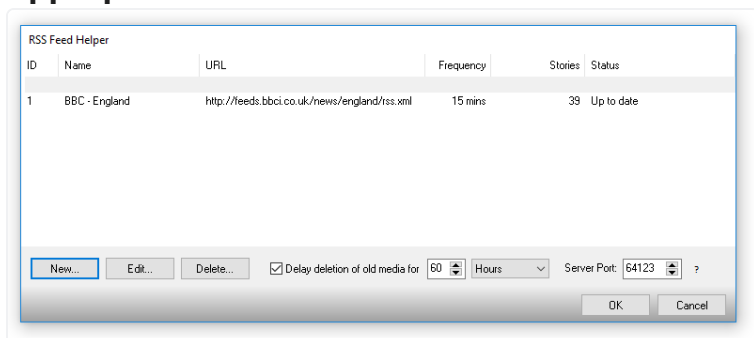
For more information about licensing apps go to [Licensing apps](#).

Once you have successfully added your app to the project it will appear in the list, as shown. The Project Apps tab of the Project Settings window will now show all apps that have been activated for this particular project that you are working on.



From this page select the RSS Feed app to highlight it and click on the **'Settings'** button to set up your app.

App Options.



This screen provides an overview of your RSS feeds that the app will download data from. It provides information on the name of the feed, its URL, the frequency which, is the interval in minutes between downloads, the number of stories in the feed and its current status.

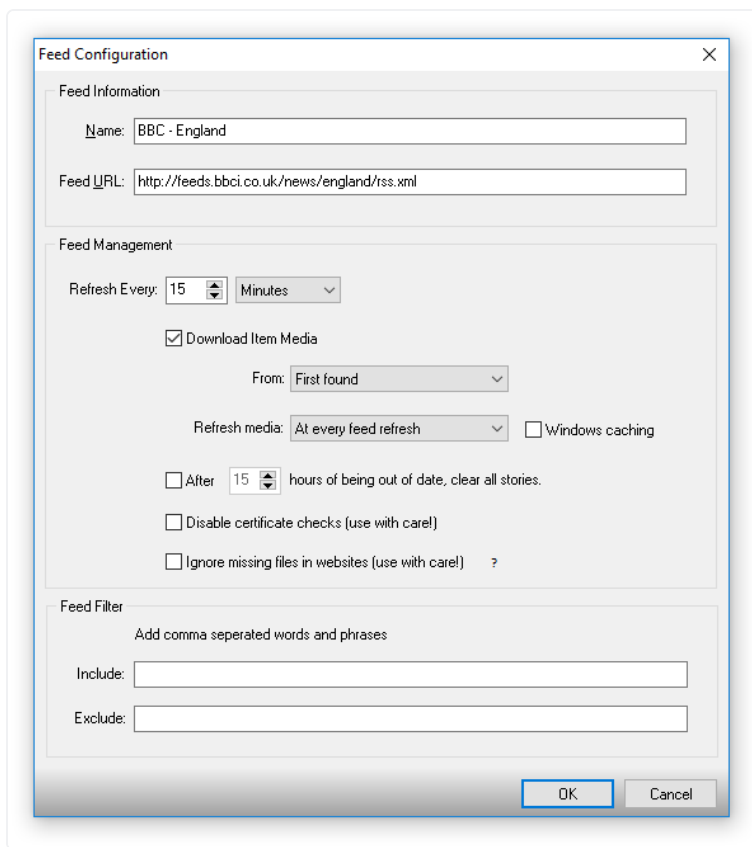
Use the controls along the bottom to **add**, **edit** and **delete** feeds in the list.

If downloaded media is no longer used in any of your feeds it will be deleted. You can delay this deletion for a number of minutes or hours using the option on this screen. Should the media re-appear in an RSS feed (within this delay period) it will not need to be downloaded again.

If a feed contains websites that are to be cached, they will be hosted locally and accessible on Server Port. Set this value to zero if not required.

Adding or Editing an RSS Feed.

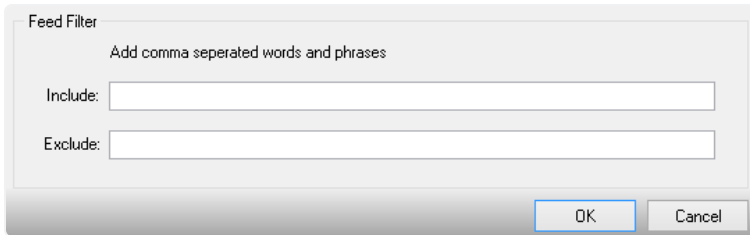
On the previous screen, **click New**, **Edit** or simply **double click** an existing RSS Feed from the list to edit it.



1. Enter the **name** of the RSS Feed
2. **Feed URL:** this is typically found by using your browser to navigate to a website that includes an RSS feed and clicking on the special RSS button there.
3. Specify the **frequency** that the app will download new feeds.
4. **Item media** associated with the feed will also be downloaded if the Download Item Media box is ticked.
5. Use the '**From**' drop down list to specify where to get the media from contained within a feed item.
 - **First Found:** Default These apply to MRSS feeds where an item may contain one or more media items.
 - **MRSS number:** The Nth media in the feed item.
 - **Closest Size:** The media that is the closest fit to the entered width and height. MRSS Type: The media that matches the entered Type.
 - **MRSS All:** All the media from a feed item is downloaded. This is only used by certain people apps such as the Slide Show app.
 - Select when to refresh media. This can be at the same time as the feed is refreshed or only when the media is a certain age etc. You can also turn on windows caching, although we recommend this should be off).
6. **After:** When the box is checked the app will clear the downloaded data from the Feed if it becomes out of date i.e. the Feed is no longer active. Enter the period, in hours, after which the Feed is assumed to be out of date.
7. **Disable certificate checks:** If your feeds are failing to download and logging certificate errors, you can select this option to disable checking of SSL/PCT-based certificates. This option should be used with caution. We recommend that the certificate issue should be resolved instead.

8. **Ignore missing files in websites:** If your feed contains a website to be cached the caching would normally fail if any file in that website is missing. Check this to cache the website anyway. Note that if you do this you must guarantee that the website will still function with missing files.

Use the **Feed Filter** section to **add searchable keywords**. Feeds will be filtered depending on the content entered here.



The image shows a dialog box titled "Feed Filter". Inside the dialog, there is a subtitle "Add comma seperated words and phrases". Below this, there are two text input fields: "Include:" and "Exclude:". At the bottom right of the dialog, there are two buttons: "OK" and "Cancel".

Include filter: Enter a list of words separated by commas. At least one of these words must be in the title or the description of the Feed item for it to be included. Leave this empty if you do not wish 'include' filtering to be performed.

Exclude filter: Enter a list of words separated by commas. If any of these words are in the title or the description of a Feed item it will be exclude. Leave this empty if you do not wish '**Exclude**' filtering to be performed.