

Powerpoint Viewer App



Introduction.

If you already have an effective PowerPoint presentation that you would like to include on your digital display and you do not wish to recreate it the PowerPoint Viewer app allows you to include existing PowerPoint files. You can select specific slides or an entire presentation to be displayed and actions can also be pre-set so that once the presentation finishes other pages within your campaign load seamlessly for uninterrupted playback. This App require Version 9.4 or above.

Requirements.

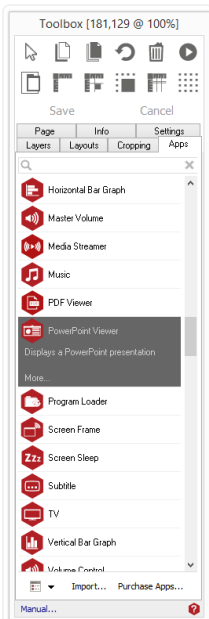
- This app has been tested with Microsoft Office PowerPoint 2003. This must be installed on the Player unit. If this is unsuitable, consider using the Program Loader page app.
- Using more than one PowerPoint app per page will have unpredictable results.

Using Power Manager app.

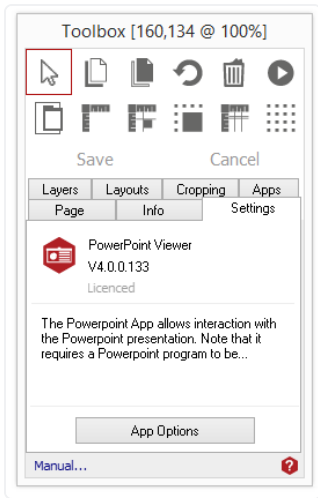
Using Power Manager app.

To access the app open an existing or new page and select the **'App'** tab of the page editor **'Toolbox'** (shown below). Apps are grouped within the relevant app packs and are displayed red if they have been licenced. For more information about licensing apps go to [Licencing apps](#).

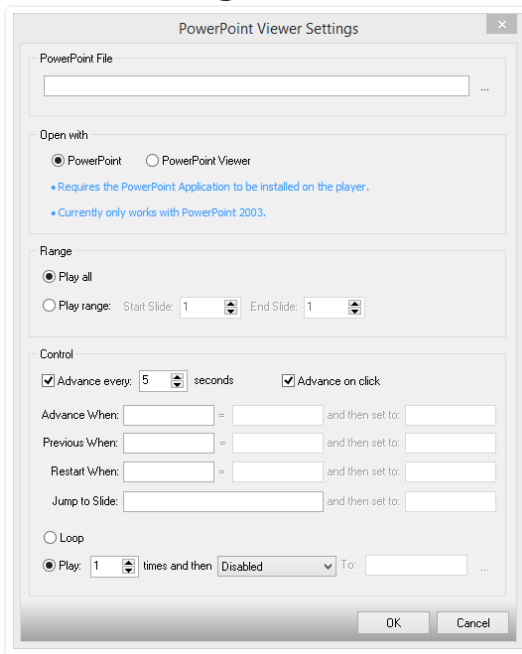
Select the app from the list or search for it using the search bar. When an app is selected it will be highlighted as shown.



Once you have selected your app draw an area on your page where you would like to use the app. The **'Settings'** tab within the Toolbox will automatically open when the app is added to the page. From here you can set your app up by clicking on the **'App Options'** button.



Viewer Settings.



PowerPoint File: A presentation file to display. This is located in the project's media folder. Type in the file name or use the button to select one.

Open with: Select which method to open the file.

Range:

Play All: Play all the slides in the presentation.

Play Range: Only play a selected range of slides within the presentation. Change the Start Slide to End Slide to define the range.

Control:

Advance every: Automatically advance to the next slide. Enter the time delay between slides.

Advance on click: Advance to the next slide when the app is clicked.

You can control the navigation using Acquire Variables that are set by other interface apps such as the [Button app](#). The actions are:

For each action enter an Acquire Variable to monitor. Leave this blank to not do the action. For each action's variable enter a value. When the variable is set to this value the action will be performed. Also enter a new value to reset the variable to once the action has been performed so that it is ready to use again.

Loop: Select this to play the Range in a continuous loop.

Play: Select this to play the Range for a fixed number of times and then perform an optional action.

Enter the number of times to play the Range.

Select an action to perform once played. The options are:

Disabled: Perform no action

Jump to Page Jump to a page: Enter a page ID in the To box or use the "...” button to select one.

Timeout Page: Time out the page

Quit Page: Quit the page

Return to Previous: Return to the previous page