

Power Manager App



Introduction.

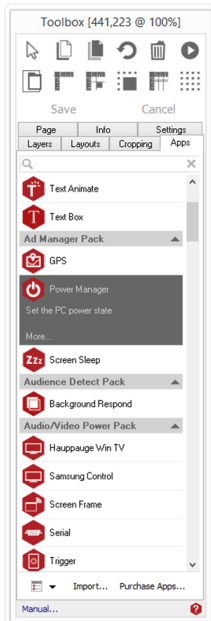
If you have screens located in office blocks, buildings or reception areas that may only be viewed during the day, you may wish to power down your machines overnight and turn them back on again in the morning. However, this can be difficult if you manage machines and players from a central location. Instead of doing this manually Power Manager enables you to specify power on and off times saving power and increasing the longevity of the machines.

Using Power Manager app.

To access the app open an existing or new page and select the **'App'** tab of the page editor **'Toolbox'** (shown below). Apps are grouped within the relevant app packs and are displayed red if they have been licenced. For more information about licensing apps go to [Licencing apps](#).

Select the app from the list or search for it using the search bar.

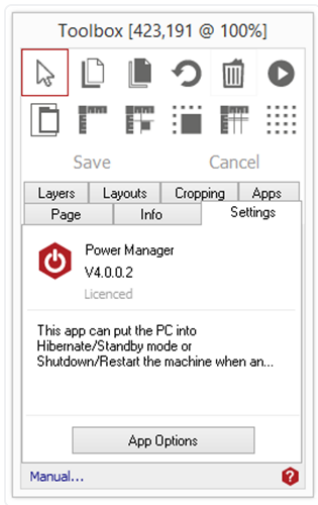
When an app is selected it will be highlighted as shown.



Once you have selected your app draw an area on your page where you would like to use the app.

The **'Settings'** tab within the Toolbox will automatically open when the app is added to the page.

From here you can set your app up by clicking on the **'App Options'** button.



Understand the App Options.

Variable: Enter a variable for the app to monitor.

Action: Enter values for the monitored Variable.

When that Variable is set to this value the corresponding power management action will be performed.

