

Master Volume App



Introduction.

If playing media such as video or audio files this app allows you to control the master volume on a particular unit and controls the sounds on individual pages.

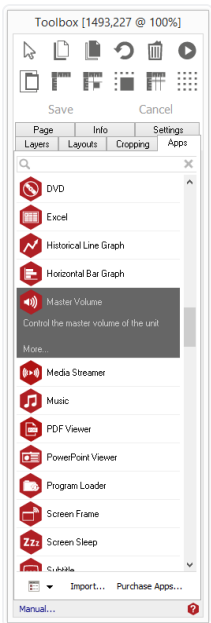
- This page app allows you to control the master volume of the unit.
- The app uses the special `$$VoulumeUpDown` variable. This is set with the volume every time it changes.
- You can set the app to adjust the volume when the page is first shown, using a specified value or the `$$VoulumeUpDown` variable that was set previously.

Using the Master Volume App.

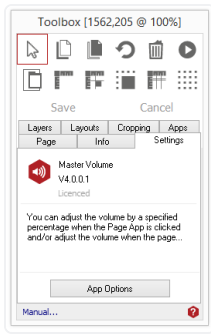
To access the app open an existing or new page and select the **'App'** tab of the page editor **'Toolbox'** (shown). Apps are grouped within the relevant app packs and are displayed red if they have been licenced.

For more information about licencing apps go to [Licencing apps.](#)

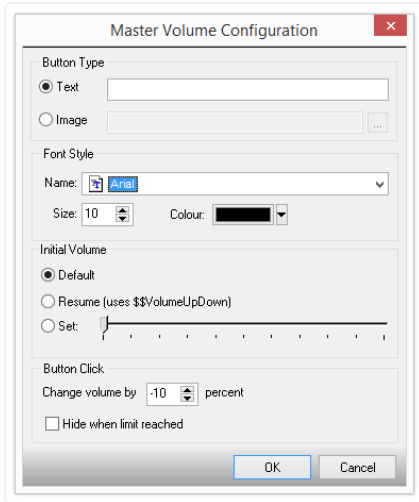
Select the app from the list or search for it using the search bar. When an app is selected it will be highlighted as shown.



Once you have selected your app draw an area on your page where you would like to use the app. The **'Settings'** tab within the Toolbox will automatically open when the app is added to the page. From here you can set your app up by clicking on the **'App Options'** button, as shown.



Configuration.



Button Type

Select how the button will look:

Text: Type in the text to show in a text button.

Image: Navigate to image in the project's media folder.

Font Style: Set the Text style to appear on the button.

Initial Volume: Set this if the unit's volume should be changed when the page is first shown:

Default: Don't set the volume with this app. Acquire is responsible for setting the volume.

Resume: Set the volume from the \$\$VoulumeUpDown variable.

As the variable is set by this app then the volume will remain the same across multiple pages.

Set: Change to this volume. Use the slider to select a volume.

Button Click.

Select what to do when the button is pressed:

Change volume by: Type in a percentage to change volume by.

Negative numbers will decrease the volume and positive numbers increase it.

Hide when limit reached: Select to hide the button when 0 or 100 percent is reached depending on whether the button increases or decreases the volume.