

# Keyboard App



## Introduction.

The Keyboard App makes adding a keyboard into your project simple. You can add a static or pop-up keyboard to your digital display or kiosks quickly and easily and the app can be used in conjunction with all other apps. Keyboards can be included on pages within your playlists so that they appear only when requested by the customer and do not therefore remain on your project continuously. It can also be set to appear automatically i.e. whenever a field appears where data can be entered into it and the position of the keyboard can also be specified. This app also includes a Keyboard Editor feature enabling you to choose and edit the style and appearance of the keyboard so that it matches your corporate identity.

## Uses.

Ideal app for capturing customer data, information and feedback.

There are 2 parts to the Keyboard App.

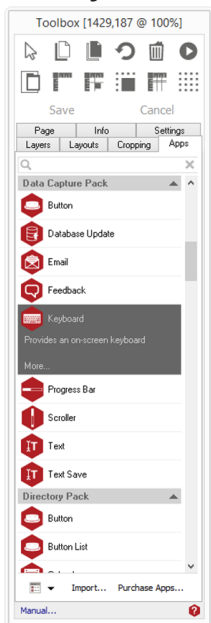
1. The Page app - allows you to display a keyboard on page, created by the Editor App.
2. The Keyboard Editor: allows you to change the appearance of the Keyboard.

## Using the Keyboard page app.

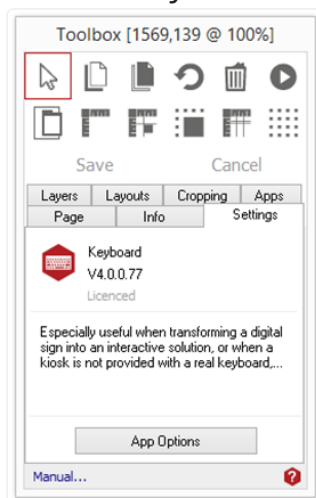
To access the app open an existing or new page and select the **'App'** tab of the page editor **'Toolbox'** (shown below). Apps are grouped within the relevant app packs and are displayed red if they have been licenced. For more information about licensing apps go to [Licensing apps](#).

Select the app from the list or search for it using the search bar. When an app is selected it will be highlighted as shown.

Once you have selected your app draw an area on your page where you would like to use the app.



The **'Settings'** tab within the Toolbox will automatically open when the app is added to the page. From here you can set your app up by clicking on the **'App Options'** button.



Understanding the App Options.

### Settings tab.

This tab allows you select a keyboard and set options for how you want it to appear.

**File:** Enter the keyboard file. This file is created with the On Screen Keyboard Editor app. It contains the graphics needed to display the keyboard in its normal and shift states as well as the mapping information which defines the location of each key.

**Opacity:** Set the transparency of the keyboard. At 100% it will be opaque.

**Hide direction:** Click the arrow and select which direction the keyboard will scroll off.

**Visible area when hidden:** Set how much of the keyboard will remain visible after hiding. This is the area that the user can press to make the keyboard re-appear. It may also have active buttons.

**Scroll speed:** Click the arrow and select how quickly the keyboard will be hidden.

**Scroll on/off:** Choose between instant or animated/sliding hiding.

**Start hidden:** Select this to hide the keyboard on start-up.

**Allow typing when hidden:** If there are still buttons visible when the keyboard is hidden then this option enables those buttons to work. This is typically used when a full *qwerty* keyboard shrinks down to its numeric keypad, or an internet browser style keyboard shrinks down to navigation buttons.

**Auto show when text edit area entered:** If selected the keyboard will automatically appear when a text entry box is entered.

**Hide when clicked outside the keyboard:** The keyboard will be hidden when the user clicks anywhere outside of the keyboard.

**Drag keyboard with non-key areas:** User can pick up and move the keyboard by clicking on an area that it not a key and dragging it to new position. It will be put back to its original place when hidden.

### Preview tab.

This tab provides an area to view and test your selected keyboard.

**Test area:** Shows keys stroke when clicked in 2.

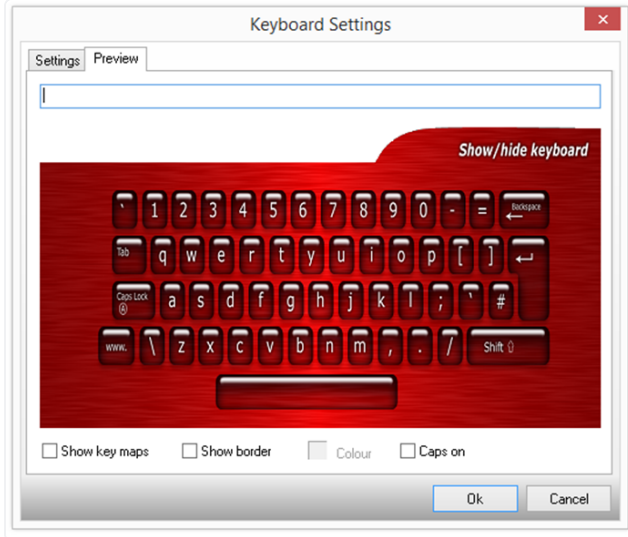
**Interactive preview of the keyboard:** Click keys to show keystrokes in 1.

**Show key maps:** Highlight the clickable areas of each key on the keyboard.

**Show border:** Show the border between visible and hidden part of keyboard. This is adjusted using the "Visible area when hidden" settings.

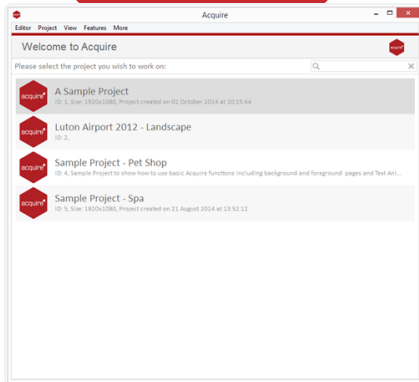
**Colour:** If the “Show border” or “Show key maps” options are selected those areas will be shown in this colour. Click the box to change the colour.

**Caps on:** Select this to show upper-case version of the keyboard. Otherwise lowercase is shown



## Using the Keyboard Editor.

From the main Welcome Screen click on the **Features** tab at the top to view the licenced apps for your editor. (see [Licencing Apps](#) for more information.) Select the app from the drop down list.



## Understanding the App Options.

