

Historical Line Graph App

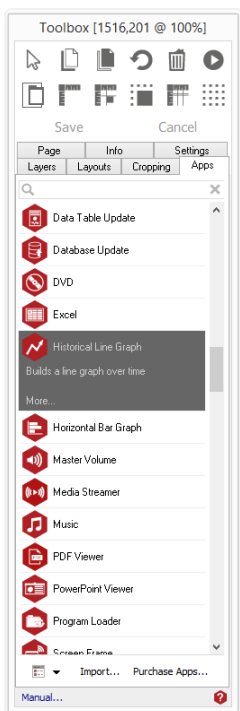


Introduction.

This page app displays a line graph which is populated during the day. The graph is drawn based on data from an XML file. The output from the OLE DB page app is compatible with this page app. The graph will automatically update once per minute, and the history is maintained between page changes.

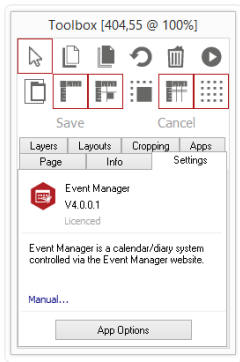
Using the page app.

To access the app open an existing or new page and select the **'App'** tab of the page editor **'Toolbox'** (shown). Apps are grouped within the relevant app packs and are displayed red if they have been licenced. For more information about licencing apps go to [Licencing apps](#).

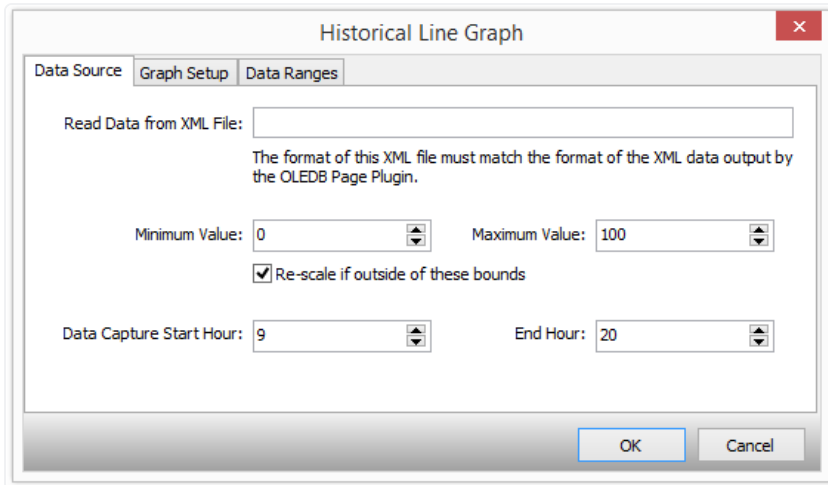


Select the app from the list or search for it using the search bar. When an app is selected it will be highlighted as shown.

Once you have selected your app draw an area on your page where you would like to use the app. The **'Settings'** tab within the Toolbox will automatically open when the app is added to the page. From here you can set your app up by clicking on the **'App Options'** button, as shown.



Data Source Tab.

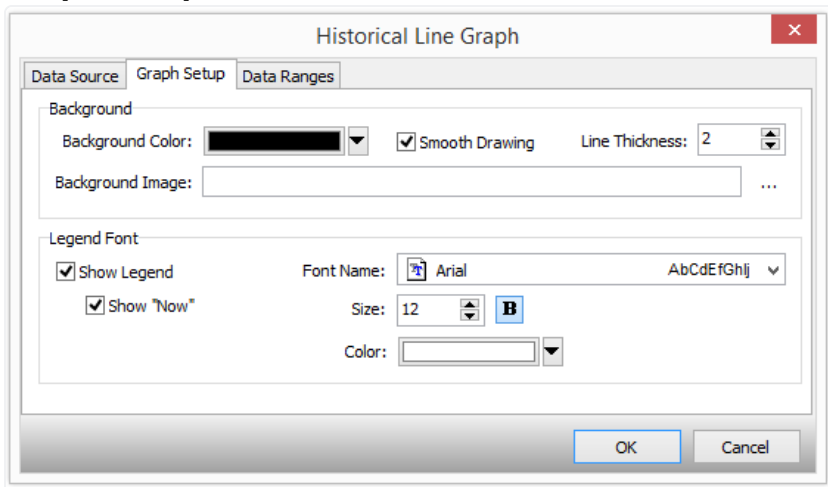


Type the path and filename of the XML file you wish to use as your data source. This can be an Acquire variable.

To enable the graph to look as expected you can specify an initial range for the graph. If you choose re-scale if outside of these bounds then these ranges will be extended if data is too large, else they will be clipped.

Use the Data Capture Start Hour to restrict capture of data during the hours selected. The times are in 24 hour clock format.

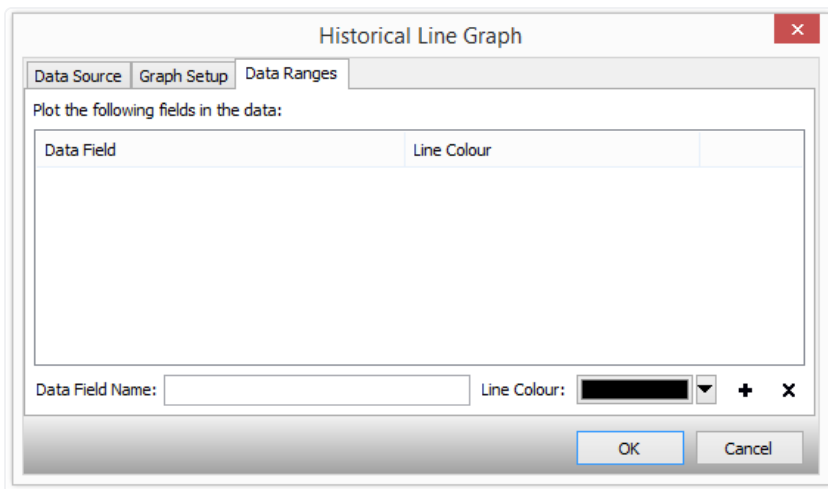
Graph Setup Tab.



Use the options on this tab to define the appearance of your graph.

You can specify a background colour, line thickness, background image, set font type, size and colour.

Date Ranges.



In here will be displayed a list of data sets to show in the graph. Each data set may have its own line colour. Use this section to specify the field name from the data set and the colour of the line.

Data Format.

The app requires the data to be in a specific XML format. The format is as follows.

```
<?xml version="1.0" encoding="ISO-8859-1"?>

<RecordSet>

    <Record>
        <Field>Field Name</Field>
        <Value>FieldValue</Value>
    </Record>

    <Record>
        <Field>Field Name</Field>
        <Value>FieldValue</Value>
    </Record>

</RecordSet>
```