

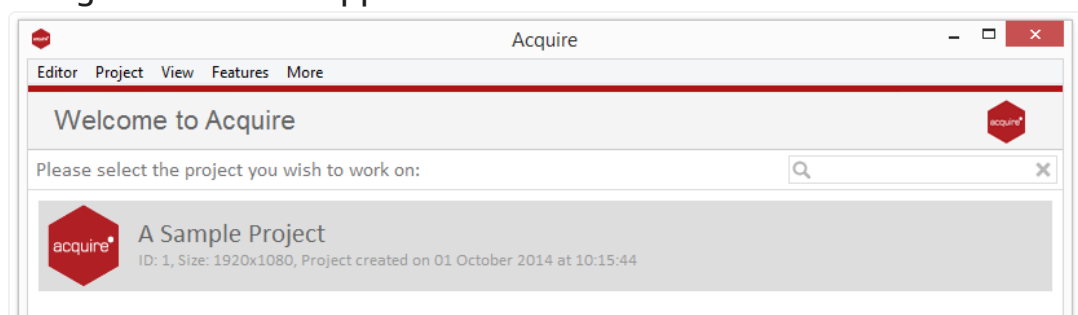
FlowchartApp



Introduction.

Shows your entire project as a flow chart showing how your pages are linked together. This is particularly useful when creating interactive projects as the app allows you to clearly see where pages navigate to when a particular action is carried out. It also allows you to check for any broken links or pages within a project that have broken links.

Using the Flowchart app

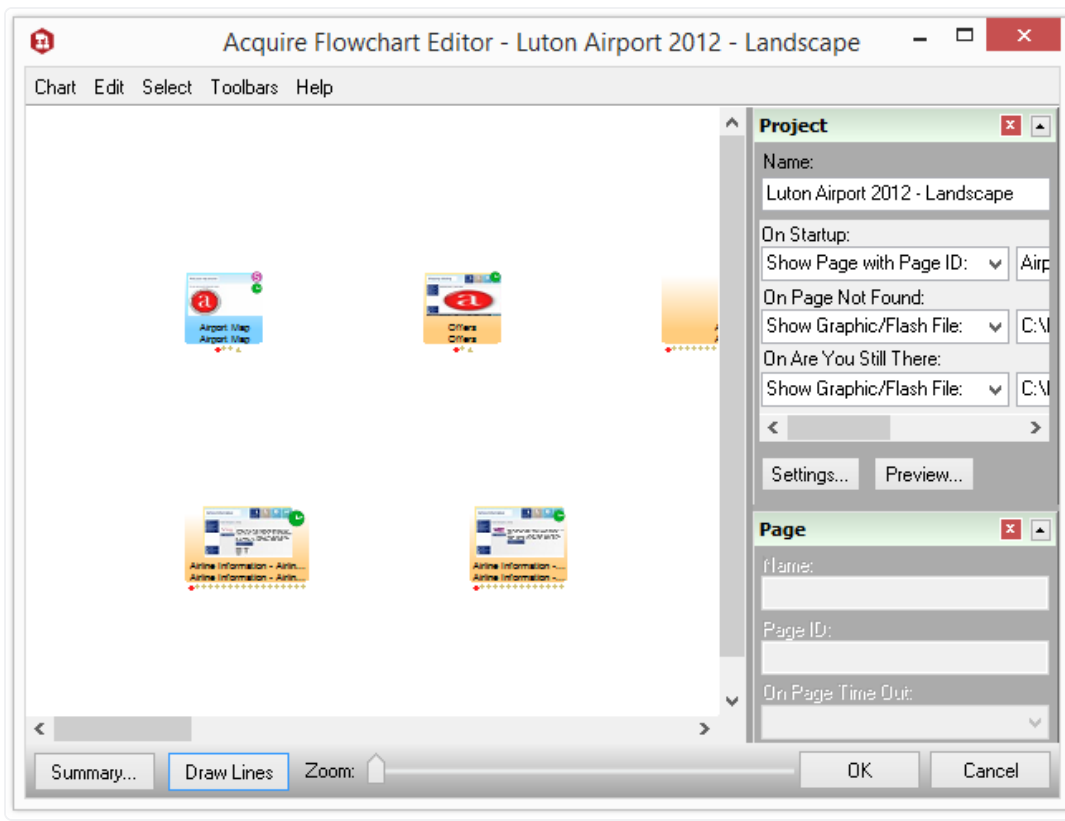


From the main Welcome Screen Page click on the project you wish to work on to highlight it and then navigate to the **'Features'** tab. Here you will find a list of licenced apps for your editor.

Click on Flowchart if already licenced. For more information about licensing apps see the

[Licensing apps](#).

App Options



The main viewing window show all the pages in your project.

The '**Outs**' at the bottom of the pages represent links, the left-most being the pages Timeout value and the other each of the page item's on click events.

These are colour coded: The lines show you what box one of these events jumps to.

You can re arrange the pages by dragging them into position.

Selected a box or line by clicking it. Hold the shift key down to multi-select. Drag on some empty space to select boxes with marquee.

Whilst marquee selecting hold the shift key down to selected boxes and lines or the control key to select only lines.

Move all connections into a page by dragging it's "**in**" arrow to another box.

Use the mouse-wheel or +/- keys to zoom.

Hold the space bar down and drag to pan, or use the scrollbars.

Create a new page by right-clicking and selecting the option from the popup menu.

Double-click a page to edit it in the Acquire Page Designer.