

Excel App

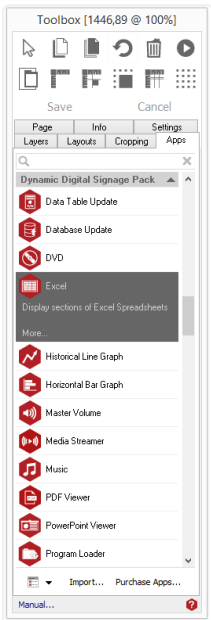


Uses.

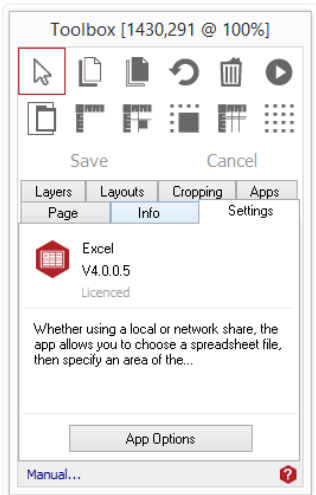
This page app allows you to display Excel spreadsheets in your projects. The app can only display CSV or XLSX files (Excel 2007 and up).

Using Excel Page App.

To access the app open an existing or new page and select the 'App' tab of the page editor 'Toolbox' (shown below). Apps are grouped within the relevant app packs and are displayed red if they have been licenced. For more information about licensing apps go to [Licensing apps](#). Select the app from the list or search for it using the search bar. When an app is selected it will be highlighted as shown.



The '**Settings**' tab within the Toolbox will automatically open when the app is added to the page. From here you can set your app up by clicking on the '**App Options**' button.



Boarder and Margins tab.

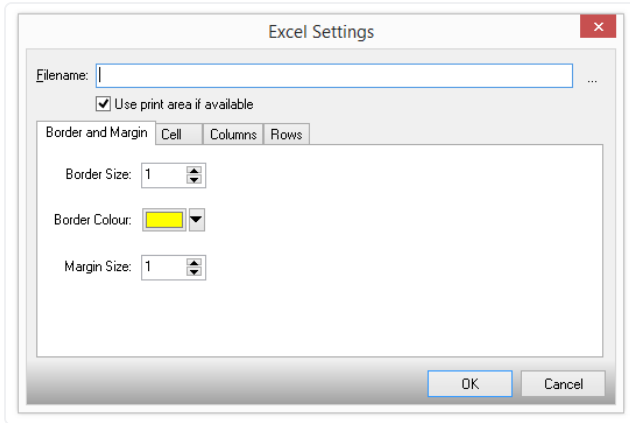
Type in the name of an Excel CSV or XLSX file for the app to display. If the file is an XLSX file the specified print area can be used.

Use the controls to set the appearance of the cells.

Border Size: The width and colour of the grid lines.

Margin Size: The space between the text and the cells edge.

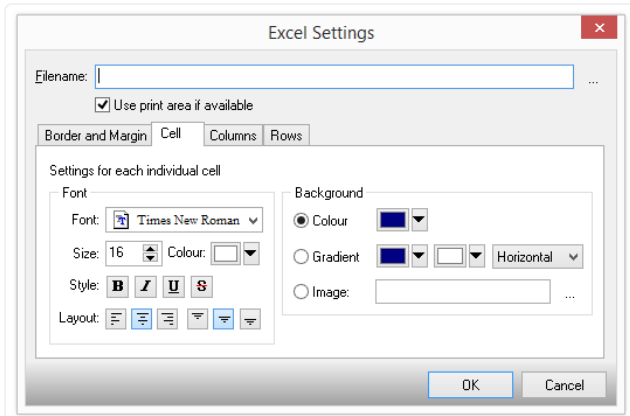
Border Colour: The colour used to draw the border of cells.



Cell Tab.

Use this section to specify the font used to draw text in the cells.

Use this section to specify what is displayed in the background of each cell.



Columns & Rows Tabs.

The columns and rows tabs work exactly the same.

In here you can specify the formatting of the table which can be applied to only the first few row if you wish.

This is particularly useful for creating a header.

