

Calendar App



Introduction.

Easily add a calendar into your project that does not require any design or formatting. The calendar is displayed in a monthly format and can be completely customised in appearance, by date and format. The calendar can also be used as a date selector allowing users to select a date from the calendar as opposed to having to type it in manually.

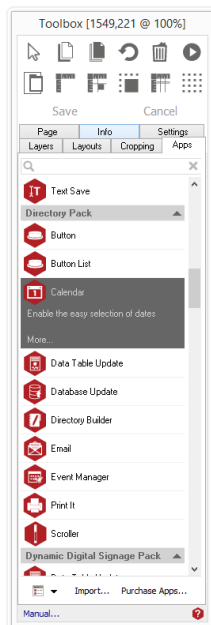
Uses.

The Calendar app also reads and writes the date from and to an Acquire variable allowing you to use this as a date selector in a booking or reservation system and works in harmony with the other apps contained within the Directory App Pack.

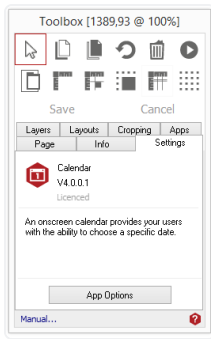
Using Calendar page app.

To access the app open an existing or new page and select the **'App'** tab of the page editor **'Toolbox'** (shown below). Apps are grouped within the relevant app packs and are displayed red if they have been licenced. For more information about licencing apps go to [Licencing apps](#).

Select the app from the list or search for it using the search bar. When an app is selected it will be highlighted as shown.

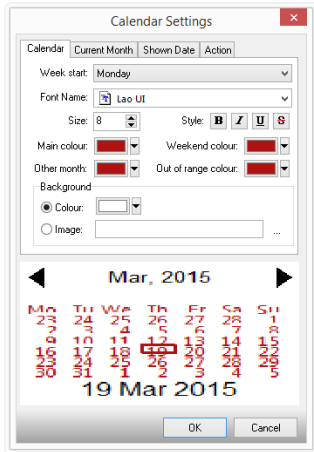


Once you have selected your app draw an area on your page where you would like the app to be shown. The **'Settings'** tab within the Toolbox will automatically open when the app is added to the page. From here you can set your app up by clicking on the **'App Options'** button.



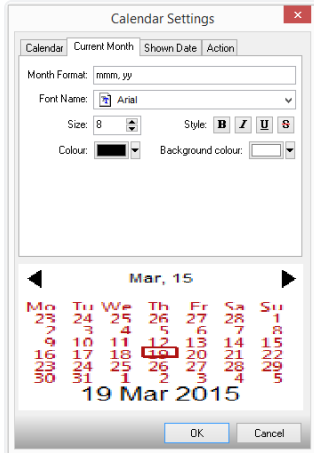
Understanding the App Options.

Calendar tab: Use the options in this tab to determine formatting, colour, font, style and image if required.



Current Month tab: Use the options in this tab to determine formatting, colour, font, and background colour.

Shown Date Tab: Similar to the options above, use the option in this tab to define formatting, colour, font and background colour.



Action Tab.

Enter the format that you want your Date text to be saved to the Variable in. See the section below (or press the Help button) for a detailed description.

Read and Write variable. Enter the name of an Acquire Variable. This will be written to by the ACQ with the selected date. The ACQ will also read this Variable and set the calendar to its value when it changes.

Range From / To. When these options are selected dates that fall outside the defined range will not be selectable in the calendar and will be shown in the "Out of range colour" set on the Calendar tab.

Calendar Current Month Shown Date Action

Date Format: dd/mm/yyyy Help

Read/Write variable: \$\$date

Range From: 12/02/2015

Range To: 12/02/2015

Date formats.

The Current Month, Shown Date and Actions tabs allow you to enter a date format. This works by entering formatting characters to represent where the day, month and year appears in the text.

If you want your date to appear as "15 Jun 2009" you would enter "dd mmm yy" where "d" is a day character, "m" is a month character and "y" is a year character. The number of formatting characters also affects the format so, entering "yy mmmm dd" would give you "09 June 15". Various formats can be achieved in this way. The table below shows you how the formatting characters are interpreted.

d = day as a number without leading zero (1-31)

dd = day as a number with leading zero (01-31)

ddd = day as an abbreviation (Sun, Mon ... Sat)

dddd = day as a full name (Sunday, Monday .. Saturday)

m = month as a number without leading zero (1-12)

mm = month as a number with leading zero (01-12)

mmm = month as an abbreviation (Jan, Feb ... Dec)

mmmm = month as a full name (January, February ... December)

yy = year as a two-digit number (00-99)

yyyy = year as a four-digit number (0000-9999)