

# Bluetooth Statistics App

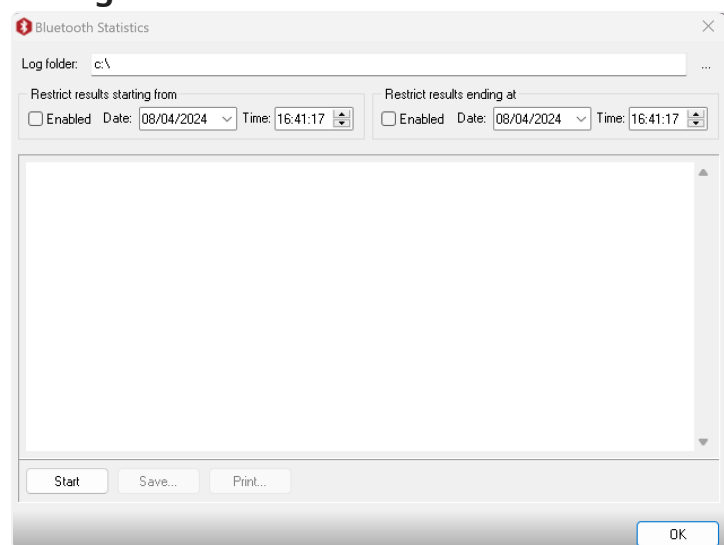


## Purpose

This app is designed to generate statistics from activities recorded by the **Bluetooth project app** and the **Bluetooth** page app.

You must first retrieve the log files before you can use this app. These can either be copied directly from the player or remotely via the PLUS! Network using Site Manager.

## Configuration window



1. Choose the folder where you have retrieved the player logs from.
2. Select a date and time range if you want statistics to be generated for a given date range.
3. The generated report will be shown in this area.
4. Pressing start will begin the statistical analysis of your log files.
5. Click this to save a generated report as a text file.
6. Click this to print out the generated report.